

## THE PLAYERS



### 206. ARTHUR SHREWSBURY

Oil on board by Gerry Wright, 1984. 40cm x 60cm. Signed in the corner and again on the back by the artist. From the series "Cricket's Golden Summer. Paintings in a Garden", exhibited at Chris Beetles, Bath, 1984. This picture comes with related ephemera and a copy of the book accompanying the series. Also with the biography of Shrewsbury by Peter Wynne-Thomas that featured this picture on the front cover.

£750



### 207. THE SOMERSET STUMPERS

Original sepia photograph. C1905, 40cm x 30cm. AE Newton, AP Wickham and H Martyn, the three famous Somerset wicket-keepers of the Golden Age photographed together at Taunton. Boldly signed in ink by all three. Very scarce.

£750



### 208. C B FRY

Rarely seen sepia photograph of CB Fry, signed in ink on Xmas day 1905. Image 10cm x 14cm.

£300





## 209. RANJITSINHJI

above left: Large sepia photograph by Hawkins of Brighton, 32cm x 37cm. A young Ranji wearing his Sussex cap, boldly signed in ink.

£950

above right: Large sepia photograph by Stearns of Cambridge, signed by Ranji, c1893. Nice early image, 43cm x 57cm

£1200

## 210. F S JACKSON (left)

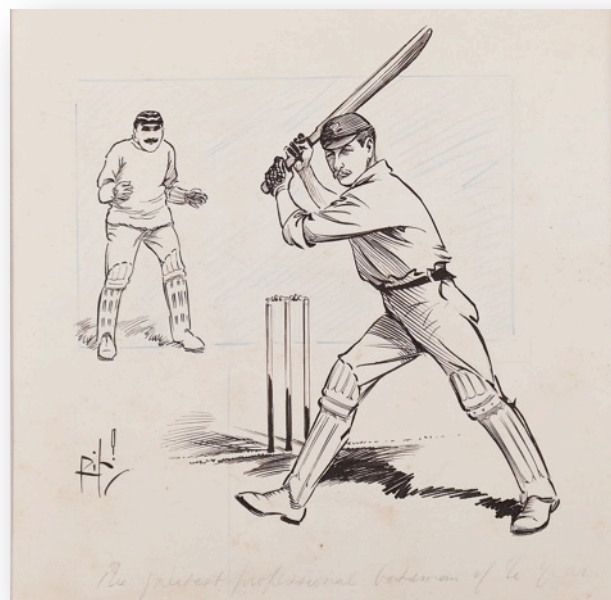
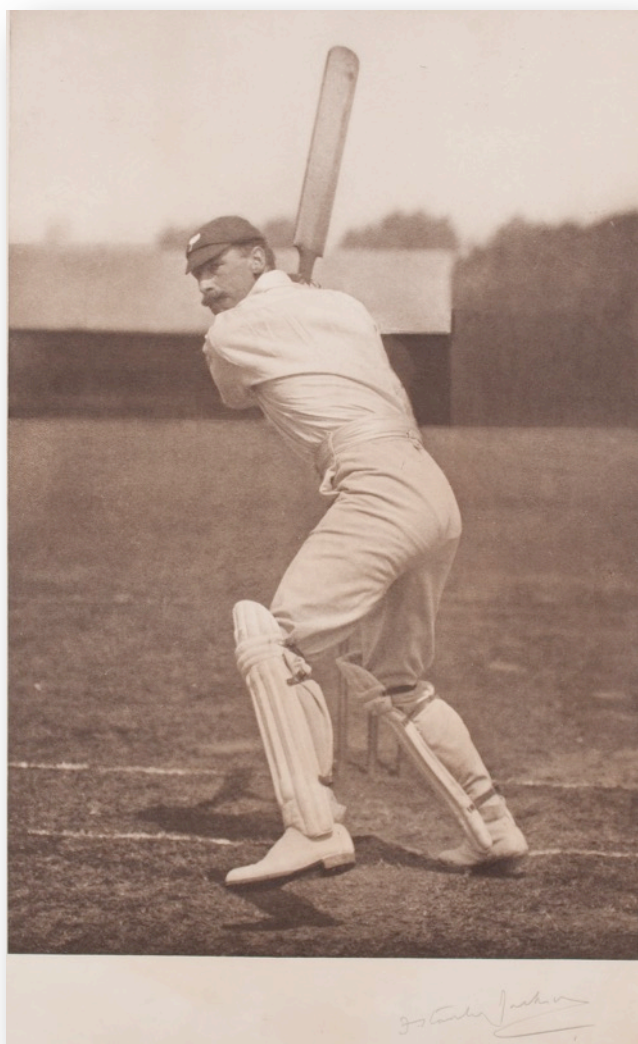
Fine large photogravure by George Beldam, published by the Swan Electric Engraving Co, 1<sup>st</sup> Sept 1905. Signed by Jackson. 30cm x 47cm.

£650

## 211. JOHNNY TYLDESLEY

Original pen and ink sketch by RP Hill ("Rip!"), 19cm x 19cm. Labelled by Hill, "The greatest professional batsman of the year". This was probably 1901 when he was chosen as a Wisden Cricketer of the Year.

£275

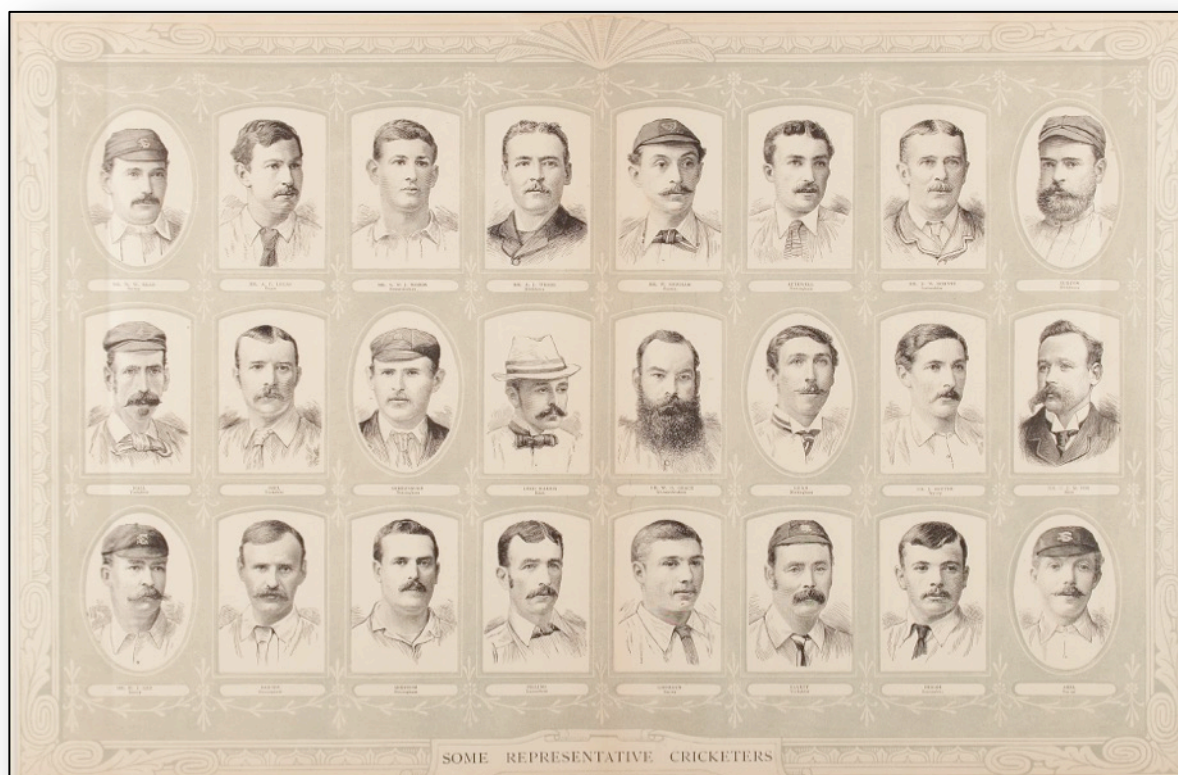






## 212. THE FIRST-CLASS CRICKETERS 1893

Fine oval photogravure, mounted and surrounded by hand-coloured vignettes of WG, Tom Richardson, Bob Thoms, the Lord's pavilion and a wicket-keeper (MacGregor?). Overall 85cm x 73cm in original oak frame with gilt slip £400



## 213. SOME REPRESENTATIVE CRICKETERS

Wood engraving with colour, 61cm x 39cm. Single fold as issued.

£200





#### 214. TEST CRICKETERS 1932/33 - BODYLINE

Australian advertising poster for BDV cigarettes, 35cm x 48cm, with fixtures for the tour and illustrations of all the likely players from both sides, 38 in all. Extremely scarce and in very good condition.

£850



#### 215. VANITY FAIR CARICATURES

We have a large number of the splendid caricature lithographs produced for Vanity Fair by artists such as Spy, Stuff and Ape. This example is perhaps the rarest, Dillon of Kent.

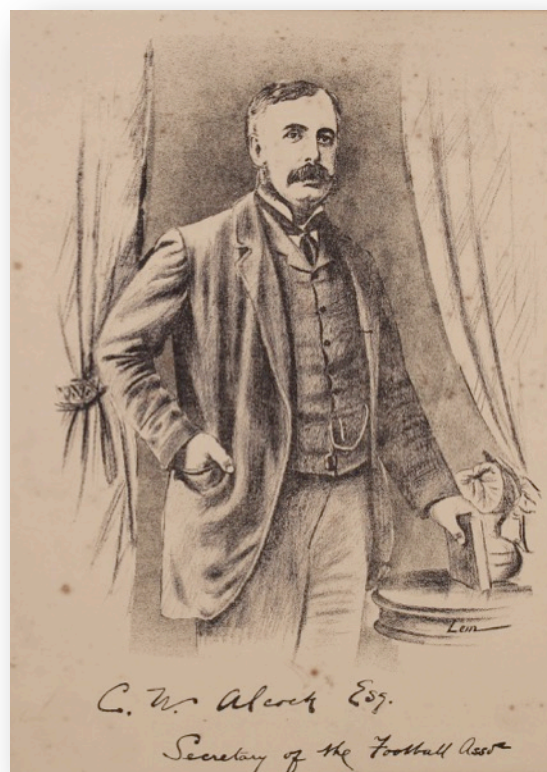
£1800



#### 216. PERCY FENDER

Original pen & ink sketch, highlighted with wash, of the Surrey and England player by Nomad, 1929. 20cm x 25cm.

£225



#### 217. C W ALCOCK

Very scarce lithograph by "Lem" of CW Alcock, Secretary of Surrey CCC and of the Football Association. 19cm x 27cm

£450





**218. WALLY HAMMOND**

Large signed photograph of the Gloucestershire and England captain. 19cm x 24cm. **£220**



**219. DENIS COMPTON**

Large signed photograph of the Middlesex and England player. 19cm x 24cm. **£120**



**220. BRADMAN SIGNED PHOTOGRAPH**

Wonderful large photograph of The Don walking out to bat at Melbourne in 1936/37. This is the so-called "Walk to Glory" - Bradman went on to score 270. More recent print from the original negative, nice original signature by Bradman in ink. Framed to a high standard to a size of 43cm x 53cm - an imposing large photograph. **£325**



**221. HAROLD GIMBLETT**

Attractive hand-tinted photograph of the Somerset and England player as a young man. 24cm x 36cm. **£325**

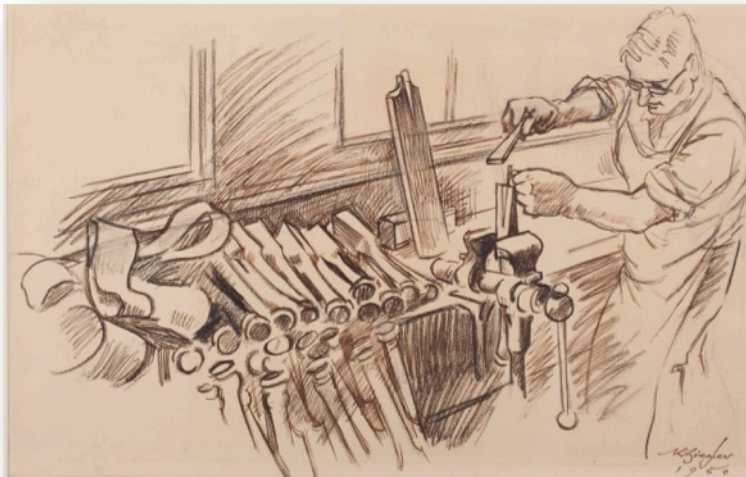


## 20TH CENTURY CRICKET



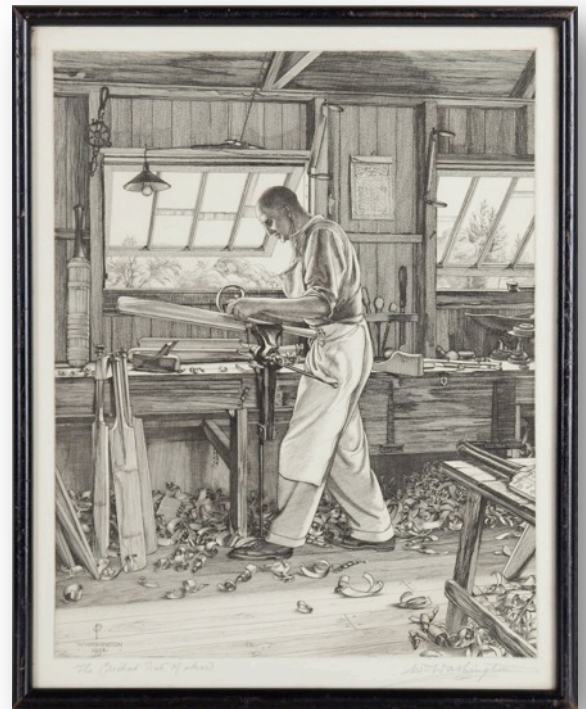
### 222. IN THE SHADOW OF THE MALVERNS

Watercolour, c1965 by David Norris.  
34cm x 24cm. **£395**



### 223. BAT MAKER

Original drawing of a bat maker, signed by R Bregler, 1950.  
This image appeared in a Boys cricket book of the time.  
34cm x 22cm. **£120**



### 224. THE CRICKET BAT MAKER (above)

Walter Warsop at work in his shed at the Nursery End at Lords. Signed etching by William Washington one of the leading etchers of the 1930s, issued in 1934 as a presentation plate for the Print Collectors Club and limited to the members only. Framed and glazed (frame 25cm x 32cm). **£875**



### 225. CRICKET MATCH (left)

Drypoint etching by E Soper, signed, c1920. 25cm x 17cm. A most appealing subject – four little boys battle for viewing space through a hole in a fence alongside a door with a Match Poster **£575**





## 226. PULL TO LEG

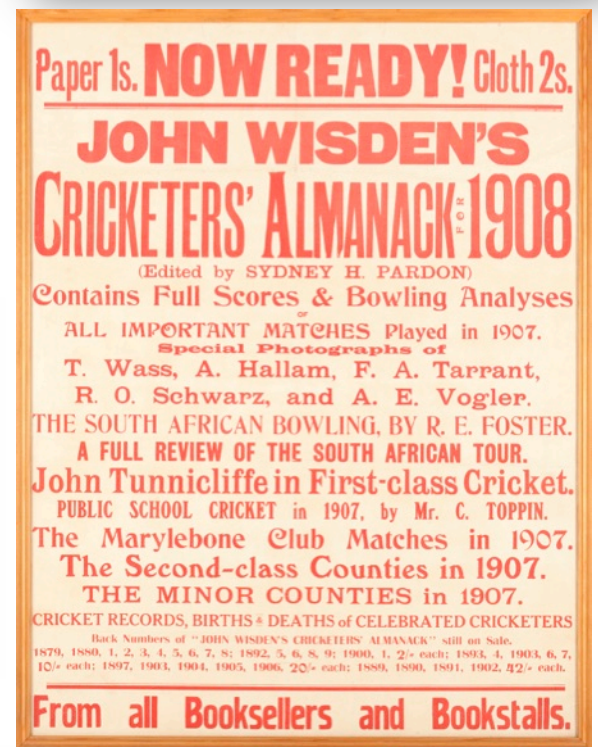
Lithograph in colours by Laurence Toynbee, 1967, signed and numbered. Limited Edition of 75 only. 58cm x 46cm. A very scarce piece by Toynbee who produced few lithographs. The artist was a keen cricketer and painted a number of cricket subjects, many featured in an Exhibition at The Fine Art Society in 1985. He was also commissioned by MCC to paint a number of works for the collection at Lord's.

£575

## 227. WISDEN POSTERS

Top right – 'Special Crown' ball advertisement, 36cm x 48cm, c1921  
Centre right – 1908 Almanack poster, 43cm x 56cm

£525 each



## 228. A CRICKET MATCH (above)

Anonymous watercolour, simple but appealing. 36cm x 18cm.

£85

## 229. CRICKET AT WHALLEY (right)

Handsome watercolour by Ionicus, 1985. 35cm x 17cm.

£350





## PERCY DRAKE BROOKSHAW

Percy Drake Brookshaw (1907-1993) was an illustrator and leading poster designer between the wars and well afterwards. He taught lithography at Goldsmith's School of Art and designed posters for London Transport and Shell Mex. He also produced advertisements for ICI and many others. His work often embraced sporting subjects and his finest designs have a pleasing art deco feel to them and a real sense of movement. We are fortunate to have a good selection of unique pieces from his studio, passed on through the family.



### 230. SHELL OIL SERIES

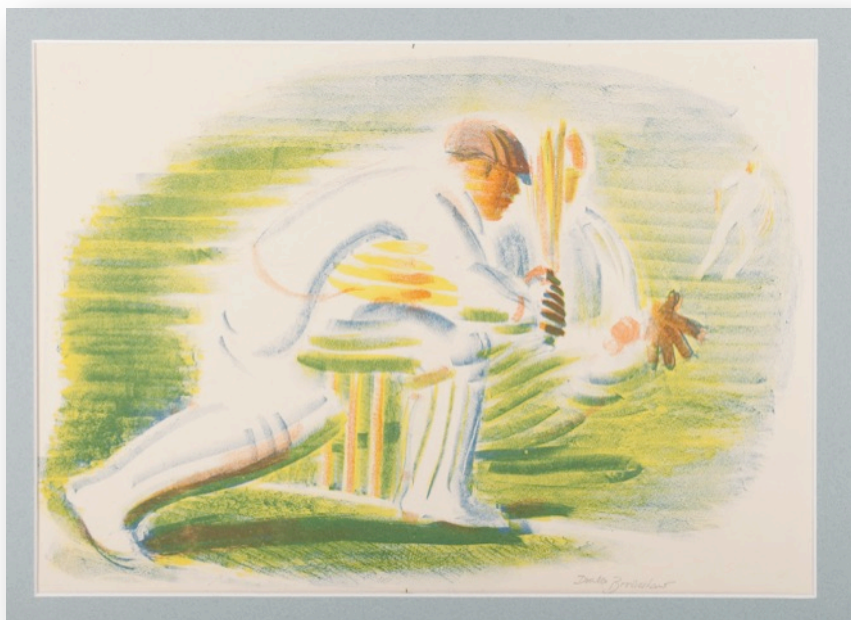
This series of chromolithographs, each 20cm x 25cm, appeared in booklet form around the time of the 1930 Ashes series. The images were accompanied by brief essays from Colonel Philip Trevor. The booklet is loosely assembled and can be kept intact or displayed as separate pieces of artwork. £750



### 231. THROUGH THE LEG TRAP

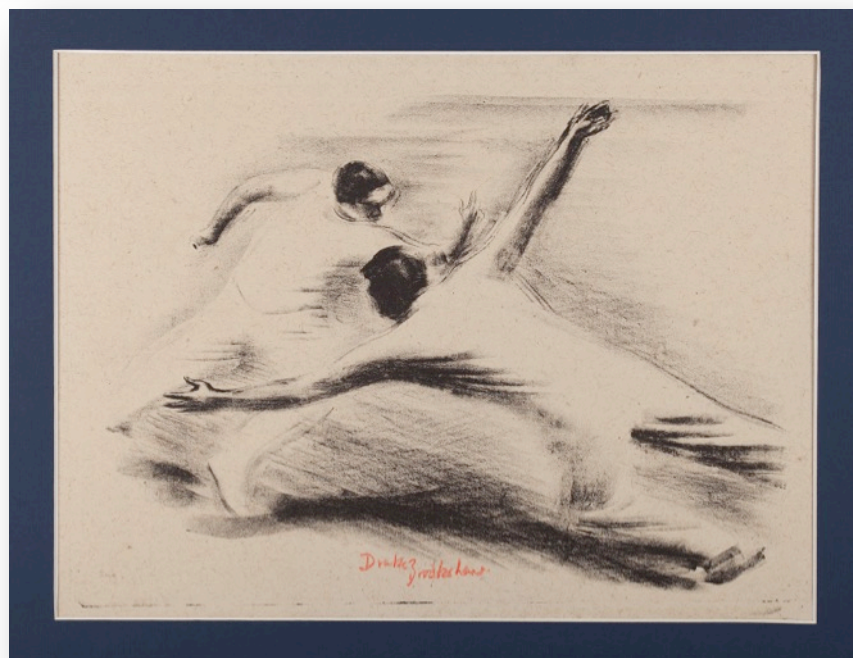
Unpublished lithograph, 36cm x 27cm, signed by the artist 1936. £750





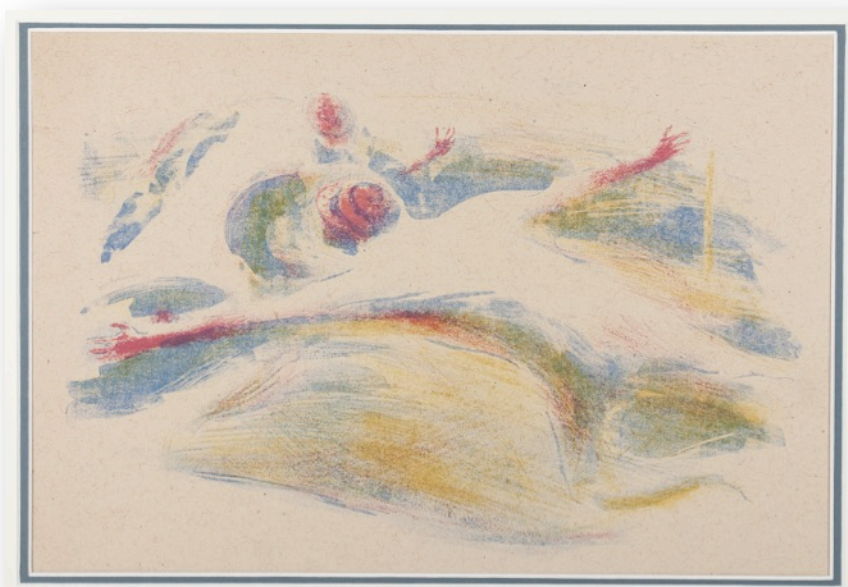
**232. SWEEP TO LEG**

Unpublished colour lithograph, 39cm x 28cm, signed by the artist. £650



**233. SLIP CATCH I**

Unpublished lithograph, 36cm x 27cm, signed by the artist. £950



**234. SLIP CATCH II**

Unpublished lithograph, 36cm x 27cm. £550





**235. CRICKET MATCHES POSTER I**

Colour lithograph used as a poster for London Underground.  
Signed by the artist in the lithograph, 1927. 46cm x 32cm.  
£750



**236. CRICKET MATCHES POSTER II**

Colour lithograph intended for match advertisement on London Underground. Match details missing, this is a proof from the artist's studio. 74cm x 50cm.  
£550