

WELCOME

We are once again delighted to invite you to a joint Cricket Exhibition by Boundary Books and Nick Potter Limited. Two years ago we held a show in Marylebone which seemed to find favour, so we have assembled another - but with some changes. Most obviously, we are holding this Exhibition not in London but in the Boundary Books showrooms in Stanford in the Vale, South Oxfordshire. We hope you enjoy the change of pace and can spare some time to visit the local attractions of White Horse Hill and, just down the road, Oxford itself.

The previous Exhibition focused on the Ashes and again we have a strong selection of material related to England v Australia contests. In particular, visitors will find a museum-standard series of photographic and ephemera-based albums that trace the history of the Ashes from 1880 to 1938. This year, however, is a special one in the history of cricket since it commemorates 100 years since three Great cricketers drew stumps for the last time – Victor Trumper, WG Grace and AE Stoddart. We have collected quite an array of material to celebrate these major figures, much of it unlikely to be seen in one place again. One special highlight is the last match-used bat belonging to Victor Trumper but there is much else besides.

In addition to these anniversaries, visitors will find an interesting and varied collection of Cricket Art dating from the 18th Century to the modern era. Perhaps pride of place must go to a stunning oil painting from 1850 which was previously unrecorded and which now adorns our specially extended gallery space.

This catalogue has grown and grown over recent weeks but it has been a pleasure for us to list such interesting material. Something for everyone we hope and we look forward to your company throughout the Exhibition period.

*Michael Down
Nick Potter*

July 2015

Boundary Books – The Haven – West Street – Childrey – Oxfordshire – OX12 9UL
mike@boundarybooks.com www.boundarybooks.com 01235 751021

Nick Potter Limited – White Cottage – Burton Hole Lane – Mill Hill – London – NW7 1AG
art@nickpotter.com www.nickpotter.com 07802 407705

CONTENTS

Part One

W G Grace (1848-1915)

Part Two

Victor Trumper (1877-1915)

Part Three

A E Stoddart (1863-1915)

Part Four

Cricket Art Through the Ages

Part Five

Ceramics, Metalware and Cricketana

W G GRACE

(1848-1915)



1. CHROMOLITHOGRAPH POSTER

Fine, large (image 42cm x 53cm) chromolithograph produced in 1897 as a calendar and advertisement for EG Tomlins, Family Grocer and Confectioner. Imposing depiction of WG at the wicket surrounded by portraits of Stoddart, Richardson and Macgregor plus the Australians Blackham, Turner and Giffen. Some creasing to parts of the print but overall a well-preserved treasure.

£650



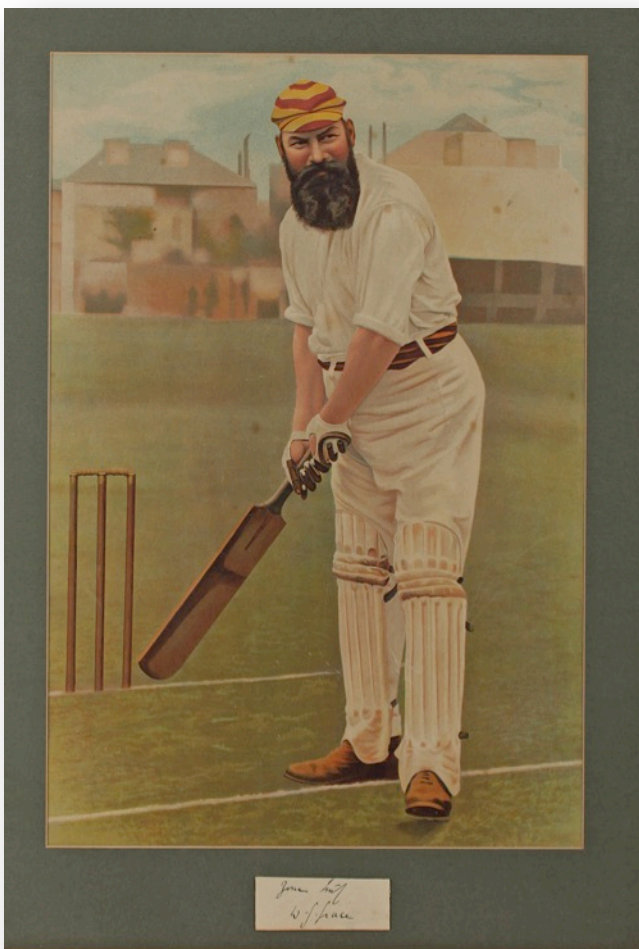
2. WG AND JOHNNY BRIGGS

Stunning small (image 12cm x 17cm) chromolithograph, framed and glazed. We have never seen this image before. £850



3. CRICKET 1885

Large (35cm x 42cm) chromolithograph of the English team, c1885, framed and glazed. The amateurs – WG, AG Steel, WW Read and A Lyttelton – are shown in MCC colours while the professionals – Barnes, Shrewsbury, Bates, Ulyett, Barlow, Peate and Gunn – are wearing their county caps. £450



4. WG AT THE WICKET

Fine, large (image 31cm x 46cm) chromolithograph, c1895, framed and glazed with facsimile signature as issued. £475



5. VANITY FAIR CARICATURE

Of all the famous images of WG this must be one of the most often encountered – and with good reason. It represents the work of Sir Leslie Ward – “Spy” – at its absolute peak, before he drifted into more conventional portraiture. It is often forgotten that this is a high quality original lithograph by Vincent Brooks, Day & Sons, produced quite early in The Champion's career in 1877. Framed and glazed, image size 26cm x 39cm. £275



6. W G GRACE (above)

Magnificent large lithograph produced by JW Arrowsmith in 1890 when they published Grace's classic book "Cricket". 45cm x 70cm. This imposing image is rarely found in good state. £895



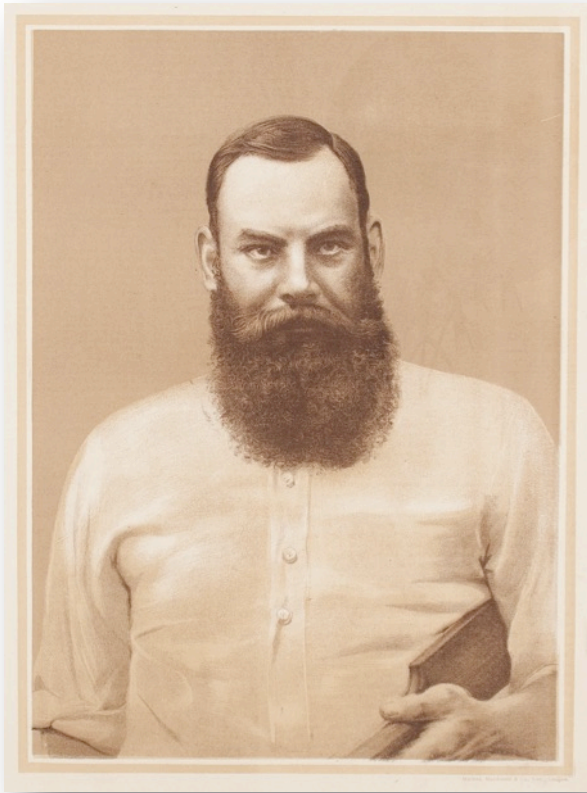
7. W G AT THE WICKET IN MCC CAP

Lithographic print issued with the periodical "Black & White" in 1895, 21cm x 33cm. £75

8. W G GRACE AT THE WICKET (right)

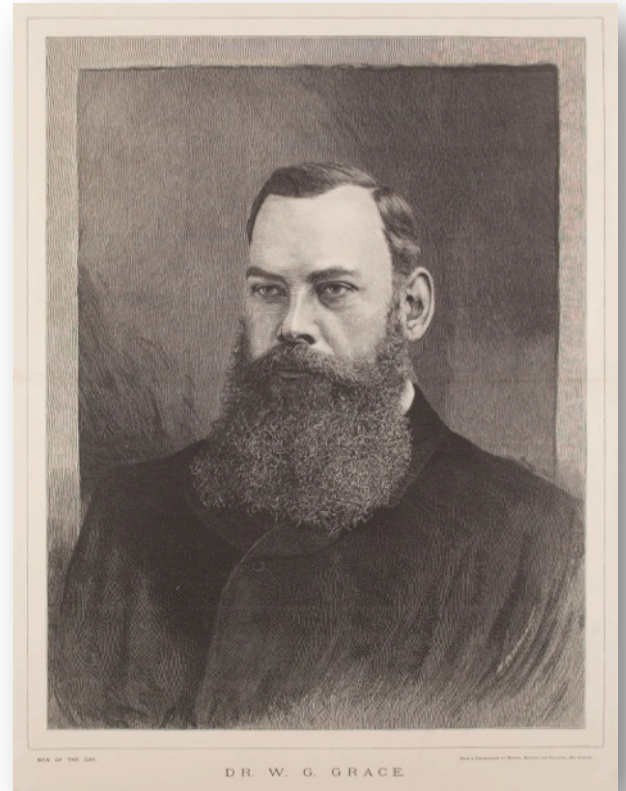
Photogravure by AS Wortley, 1890. 39cm x 56cm. The archetypal portrait of WG and one of the iconic images of cricket. Signed by the artist and the subject and limited to 100 copies. The original painting is at Lord's. £950





9. DR W G GRACE I

Attractive sepia chromolithograph by Maclure, Macdonald & Co of Glasgow (frame 42cm x 53cm). This little known image appeared in *Pen and Pencil* in 1889. A fine example, framed and glazed. £285



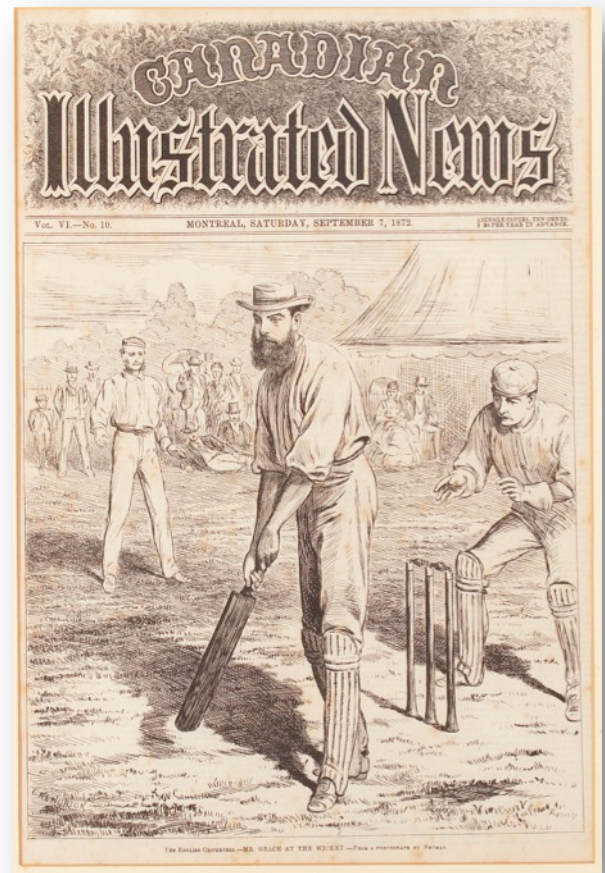
10. DR W G GRACE II

Wood engraving with a single fold, as issued in 'Men of the Day' c1890. 35cm x 45cm. £85



11. DR W G GRACE III

A delicate lithograph, rarely seen, c1890. 8cm x 24cm. £285



12. WG IN CANADA 1872

Rare wood engraving from the cover of the *Canadian Illustrated News*, Montreal, 1872. During the tour by Fitzgerald's team. £275



13. W G PULLING A BALL

Photogravure by Swan Electric Engraving Co, 1897.
Nicely signed in ink by WG £350



14. CENTENARY TEST POSTER

Large poster, printed in colours, advertising the Centenary Test at Lord's, August 1980. 102cm x 62cm. £295

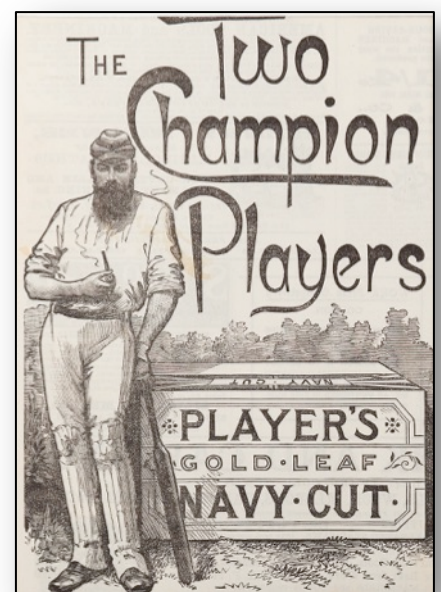


15. POLITICAL CARTOON

Large, 25cm x 40cm, hand-coloured wood engraving from the journal Moonshine, June 15, 1895. Depicts WG in conversation with Sir William Harcourt, Gladstone's Chancellor: Well done, Grace! You keep in as well as we do!" "Yes, Sir William. But I'm obliged to do something for it!" Cartoon by Alfred Bryan, a popular illustrator who drew WG on many occasions. £125

16. ADVERT (right)

Example of a typical advert featuring WG- The Two Champion Players. Wood engraving from journal.



£20

CARTE DE VISITE PHOTOGRAPHS

The 'carte de visite' was a small albumen photographic print mounted on a slightly larger stiff card to be the approximate size of a visiting card, c100mm x 64mm. First patented in 1854, they became very popular but were gradually replaced by the larger cabinet card from the early 1870s onwards and finally by the picture postcard after 1900. They are now very scarce and this current collection of cards showing WG and his family provides a special opportunity for the collector.

£4995 the collection





above left: WG, WR Gilbert & GF
above centre: WG & GF Grace
above right: EM Grace

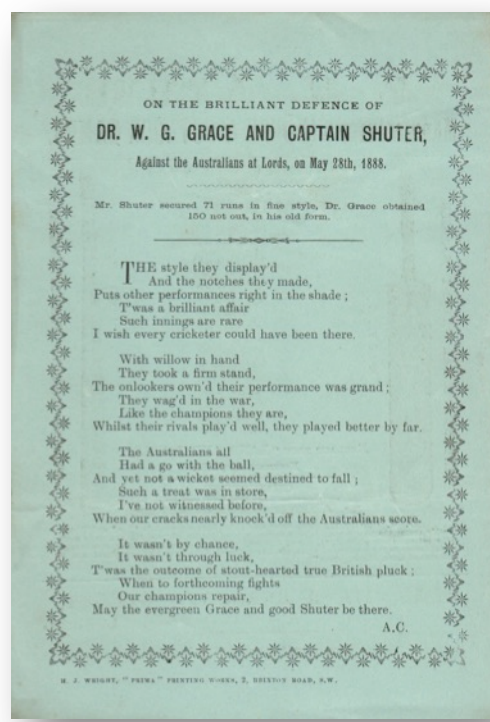
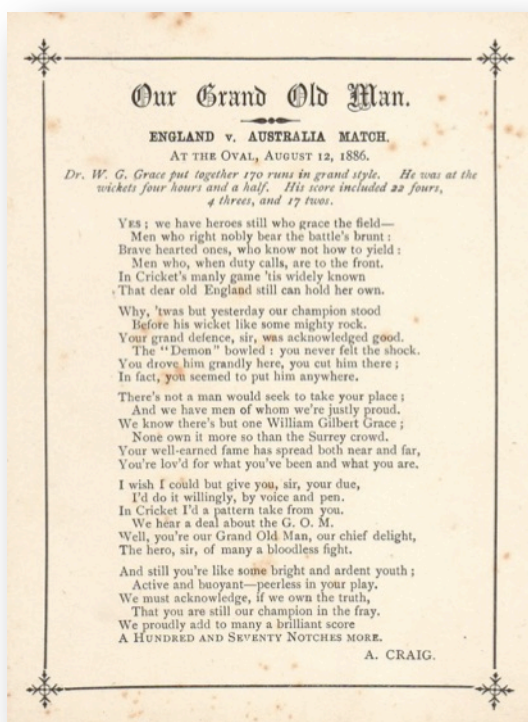
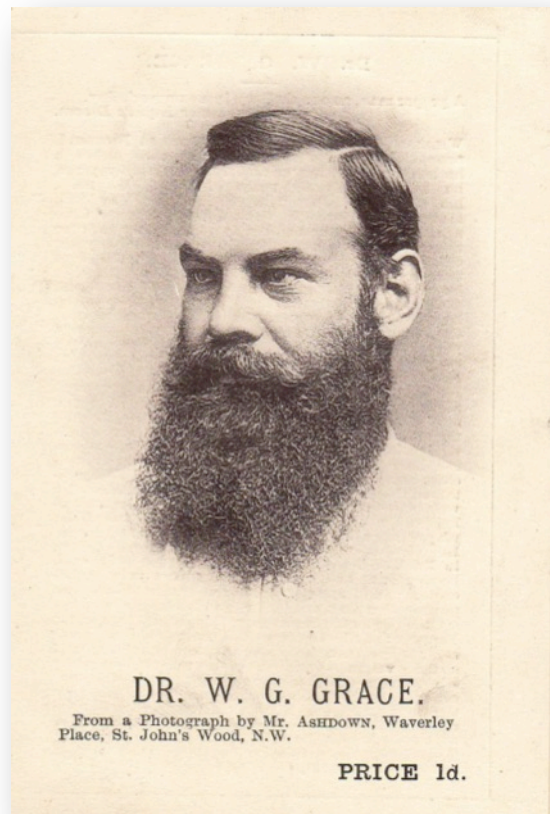
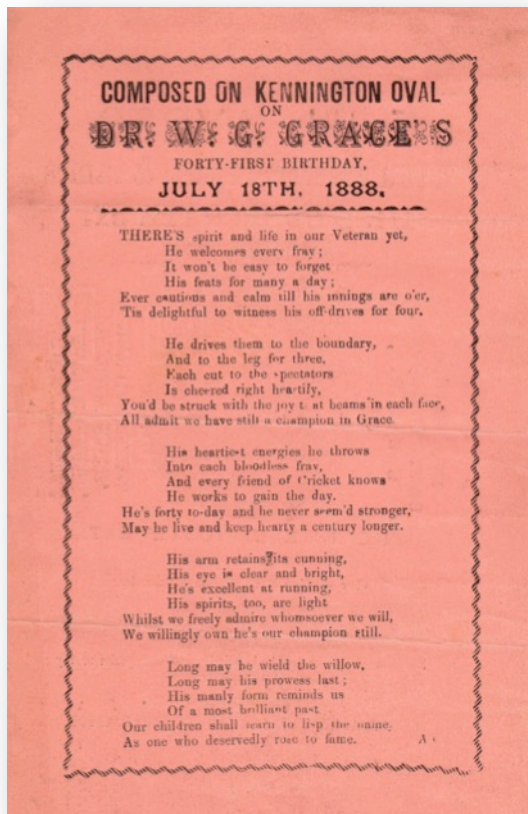


left & centre: GF Grace
above: Gloucestershire 1877

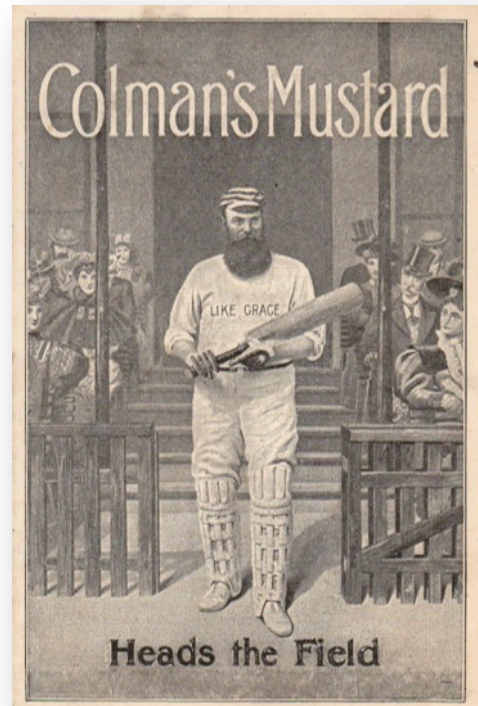
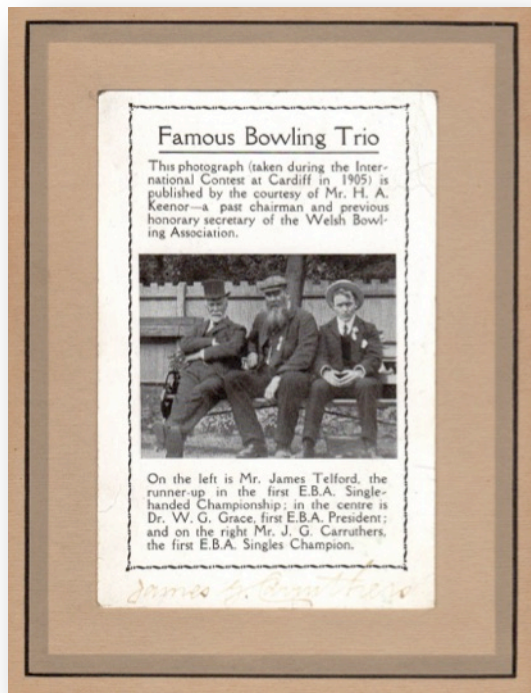
POEMS AND BIOGRAPHIES BY ALBERT CRAIG

Albert Craig, "The Surrey Poet", wrote, published and sold single sheet poems and small 4pp biographical booklets around the grounds of England during the late 19th and early 20th centuries. His work was ephemeral and is now scarce. A full biography of Craig and catalogue raisonné of his work has been produced by Tony Laughton and was published by Boundary Books in 2008. Some of his poems on WG are available here.

£250 ea



WG GRACE EPHEMERA

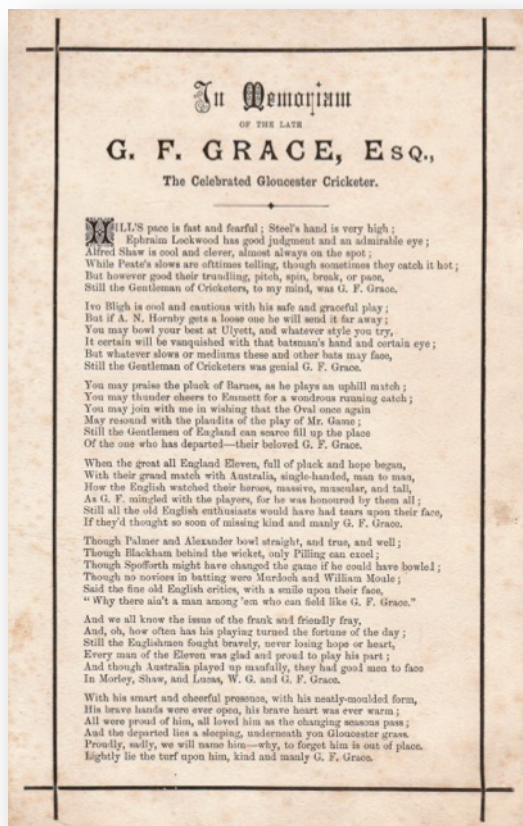


17. WG AND BOWLS

Printed photograph taken in 1905 and published by the Welsh Bowling Association. It shows WG with the winner and runner-up of the first EBA Championship. WG was the first President. Faintly signed by the winner £75

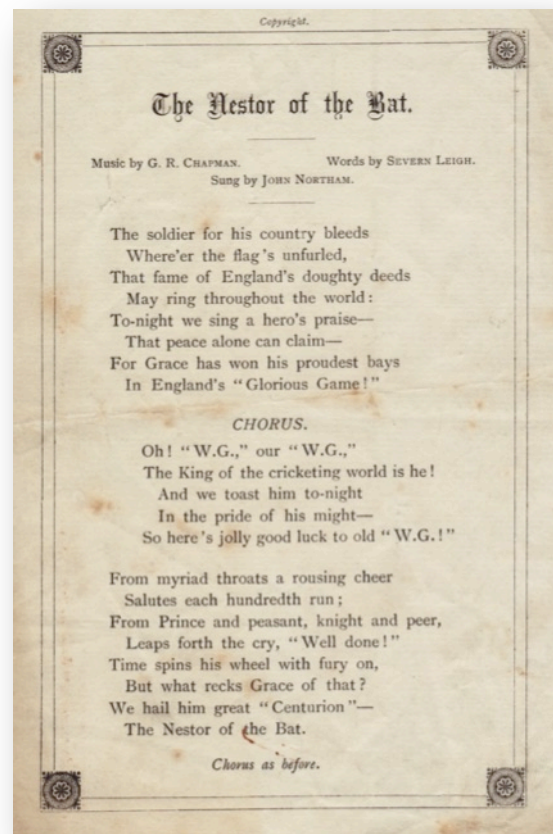
18. COLMAN'S TRADE CARD

Very scarce trade card (8cm x 12cm) with printed back for Colman's mustard. Issued in 1895 after WG's great feats in May. £150



19. GF GRACE - IN MEMORIAM

Scarce elergy for GF Grace who died in 1880. £350



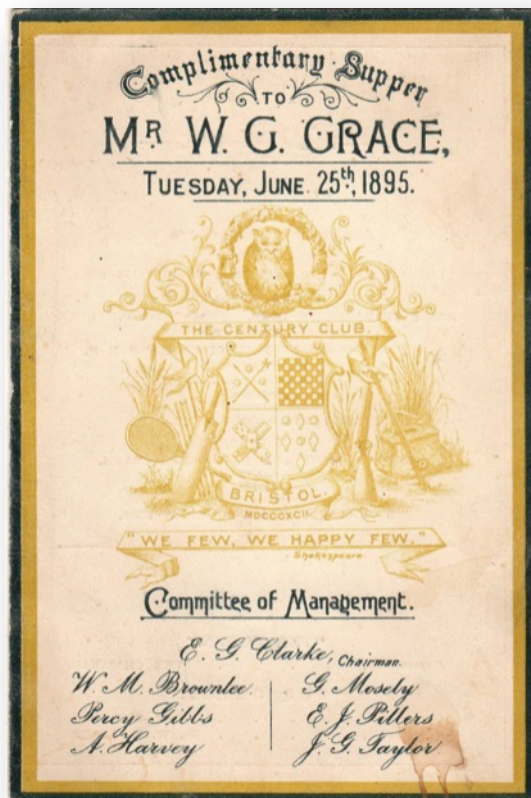
20. THE NESTOR OF THE BAT

Rousing song for WG, written by Severn Leigh and sung by John Northam. £150



21. LIEBIG MENU CARD

Scarce menu card produced in a set by Liebig (producers of Oxo cubes) around 1896. 14cm x 19cm with text to the reverse. We also stock the other cricket cards depicting Ranji, Tom Richardson, Stoddart and JT Hearne. £200



22. CENTURY OF CENTURIES MENU

Very scarce 4pp folding menu card for a dinner given on 25 June 1895 by the Century Club to celebrate Grace's hundredth century. The Club was exclusive and few menus will have survived £650

| Lord's Ground. | | | |
|-----------------------------------|------------------------|----------------------------|-----------|
| M.C.C. AND GROUND V. AUSTRALIANS. | | | |
| MONDAY, MAY 27, 1878. | | | |
| M.C.C. | | AUSTRALIANS. | |
| First Innings. | | First Innings. | |
| W. G. Grace, Esq. | c Midwinter, b Allan | c Hearne, b Morley | 0 |
| A. N. Hareley, Esq. | b Spofforth | c Wild, b Shaw | 10 |
| C. Booth, Esq. | b Doyle | c Grace, b Morley | 4 |
| A. W. Kitley, Esq. | c A. Deane, b Doyle | c Booth, b Morley | 0 |
| A. J. Webb, Esq. | b Spofforth | c T. W. Garrett, Esq. | 6 |
| Wild | b Doyle | c F. E. Spofforth, Esq. | 1 |
| Flower | c and b Spofforth | c W. Gregory, Esq. | 0 |
| G. G. Hearne | b Spofforth | c W. F. Doyle, Esq. | 2 |
| Shaw | c Murdoch, b Spofforth | c W. L. Marshall, Esq. | 9 |
| G. F. Vernon, Esq. | not out | c and b Shaw | 6 |
| Morley | not out | c and b Shaw | 6 |
| | B, 1-b, w, n-b | not out | 2 |
| Total | 33 | Total | 19 |
| Second Innings. | | Second Innings. | |
| A. N. Hareley, Esq. | b Doyle | c Hearne, b Morley | 1 |
| C. Booth, Esq. | b Doyle | c Wild, b Shaw | 10 |
| A. W. Kitley, Esq. | b Doyle | c Grace, b Morley | 4 |
| A. J. Webb, Esq. | b Spofforth | c Booth, b Morley | 0 |
| Wild | b Doyle | c T. W. Garrett, Esq. | 6 |
| Flower | c and b Spofforth | c F. E. Spofforth, Esq. | 1 |
| G. G. Hearne | b Spofforth | c W. Gregory, Esq. | 0 |
| Shaw | c Murdoch, b Spofforth | c W. F. Doyle, Esq. | 2 |
| G. F. Vernon, Esq. | not out | c W. L. Marshall, Esq. | 9 |
| Morley | not out | c and b Shaw | 6 |
| | B, 1-b, w, n-b | not out | 2 |
| Total | 33 | Total | 19 |
| Bowling Averages. | | Bowling Averages. | |
| M.C.C.—First Innings. | | M.C.C.—First Innings. | |
| Boyle | 14 7 14 3 | Boyle | 8 1 6 3 5 |
| Spofforth | 5 3 3 4 6 | Spofforth | 9 2 16 5 |
| Allan | 9 4 14 1 | | |
| Second Innings. | | Second Innings. | |
| Boyle | 8 1 6 3 5 | Boyle | 8 1 6 3 5 |
| Spofforth | 9 2 16 5 | Spofforth | 9 2 16 5 |
| Allan | 9 4 14 1 | | |
| Bowling Averages. | | Bowling Averages. | |
| AUSTRALIANS—First Innings. | | AUSTRALIANS—First Innings. | |
| Shaw | 33 25 10 5 | Shaw | 8 6 4 1 |
| Morley | 33 19 31 5 | Morley | 8 4 5 0 |

23. SCORECARD 1878

Silk scorecard for MCC v The Australians, May 1878 at Lord's. The match when Boyle and Spofforth bowled out a fine side, including WG, for 33 and 19. A taste of things to come. £350

| LONDON COUNTY CRICKET CLUB. | | | | | | | | | | | |
|--|--------------------|-------|--|-------|----|-------------------|--|--|------------|--|--|
| Crystal Palace, August 17th, 1901. | | | | | | | | | | | |
| London County v. Teddington. | | | | | | | | | | | |
| TEDDINGTON. | | | First Innings. | | | Second Innings. | | | | | |
| 1 | A. A. Baker | | b Kenward | | 9 | | | | | | |
| 2 | R. Powell-Williams | | c Darke, b Cosens | | 67 | | | | | | |
| 3 | R. S. Lucas | | c and b Kenward | | 0 | | | | | | |
| 4 | A. Worsley | | b Kenward | | 26 | | | | | | |
| 5 | R. O. Lee | | c Frith, b Cosens | | 0 | | | | | | |
| 6 | L. Tamworth | | b E. W. Dillon | | 10 | | | | | | |
| 7 | W. L. Roper | | b E. W. Dillon | | 9 | | | | | | |
| 8 | A. J. Clarke | | b E. W. Dillon | | 3 | | | | | | |
| 9 | G. H. Hall | | b Cosens | | 1 | | | | | | |
| 10 | R. Staples | | run out | | 24 | | | | | | |
| 11 | G. F. Mead | | c Beldam, b E. Dillon | | 4 | | | | | | |
| 12 | J. P. Mead | | not out | | 2 | | | | | | |
| | | | B 17, 1-b, w, n-b | | | 17 B, 1-b, w, n-b | | | | | |
| | | | Total..... | | | 172 | | | Total..... | | |
| 1st Innings...1 for 10 | | | 2-18 2-74 4-101 5-111 6-122 7-130 8-131 9-159 10-168 | | | | | | | | |
| LONDON COUNTY. | | | First Innings. | | | Second Innings. | | | | | |
| 1 | G. W. Beldam | | c Worsley, b Lee | | 19 | | | | | | |
| 2 | W. F. L. Frith | | c Tamworth, b Lee | | 55 | | | | | | |
| 3 | R. H. Dillon | | b Lee, b Lee | | 17 | | | | | | |
| 4 | A. F. Newman | | b Lee | | 1 | | | | | | |
| 5 | H. Stafford-Webber | | b Lee | | 1 | | | | | | |
| 6 | G. Cosens | | c Tamworth, b Lucas | | 0 | | | | | | |
| 7 | T. A. Darke | | c Tamworth, b Worsley | | 61 | | | | | | |
| 8 | E. W. Dillon | | b Lee | | 0 | | | | | | |
| 9 | Dr. W. G. Grace | | not out | | 65 | | | | | | |
| 10 | Smith | | not out | | 8 | | | | | | |
| 11 | F. Benton | | | | | | | | | | |
| 12 | Kenward | | | | | | | | | | |
| | | | B 25, 1-b 10, w, n-b | | | 35 B, 1-b, w, n-b | | | | | |
| | | | Total..... | | | 262 | | | Total..... | | |
| 1st Innings...1 for 55 | | | 2-78 3-80 4-92 5-93 6-109 7-109 8-249 9- | | | | | | | | |
| 2nd Innings...1 for | | | 2- 3- 4- 5- 6- 7- 8- 9- | | | | | | | | |
| PRICE ONE PENNY | | | | | | | | | | | |
| Printed on Ground by J. J. KILLICK & Co. Ltd., London. | | | | | | | | | | | |

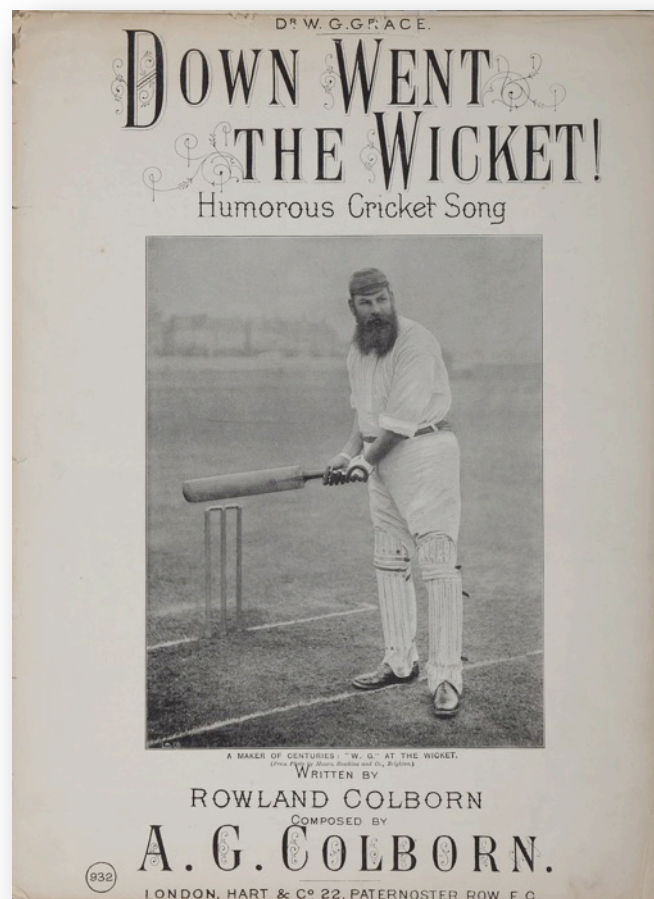
24. LONDON COUNTY SCORECARD

Excellent scorecard for the match between London County and Teddington at Crystal Palace on 17 August 1901. WG scored 65 not out. The card was the property of JP Mead who played for Teddington in the match and it is sold with his Club fixture list for 1913 and the letter electing him to membership of MCC in 1928. He was peoposed by RS Lucas and seconded by AJ Webbe. Memorabilia for the short-lived London County is hard to find. £100



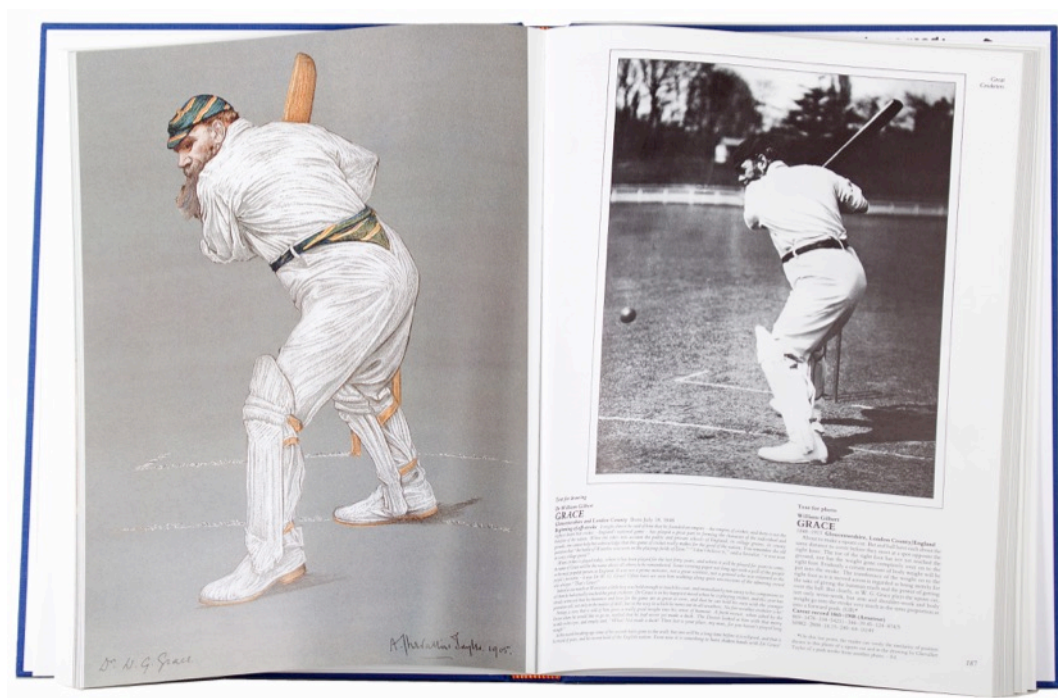
25. SHEET MUSIC I

Sheet music for *The Song of the Centuries* by J Harcourt Smith, 1895. 25cm x 35cm. £275



26. SHEET MUSIC II

Sheet music for *Down Went the Wicket* by AG Colbourn, c1890. Fine photolithograph of WG, 25cm x 35cm. £275



27. GREAT CRICKETERS by G A BELDAM

In 2000, Boundary Books published the story of George Beldam, the pioneering photographer and first-class cricketer, told by his son. Beldam was very friendly with WG and the book contains many images of the Great Man. Beldam was, of course, the photographer of the famous Victor Trumper image – jumping out to drive.

Copies available at £175

W G GRACE PHOTOGRAPHS BY GEORGE BELDAM

George Beldam was a Middlesex cricketer in the early years of the 20th century but he was so much more. A pioneer of high speed action photography, his images of cricketers from the Golden Age are legend. In the Exhibition you will be able to see his landmark books on Great Batsmen and Great Bowlers as well as the full account of his life and work that was published by Boundary Books in 2000. Beldam was a great friend of WG – as well as Ranji and Archie MacLaren – and what a godsend of a subject for the photographer! Here, we are able to offer five original prints made at the time (c1905) by Beldam from his own glass negatives. These are 9cm x 11cm, the same size as the glass negative. Except in the case of the famous photogravures of Trumper, FS Jackson and Ranji, most Beldam images have only been seen as pale half-tones in the books published by Macmillan in 1905 and 1907. These truly original prints bring the subjects to life.

Also in the Exhibition, we will be showing the first results of a new collaboration between Boundary Books and The George Beldam Collection to dig deep into the archive of over 1600 images and produce high quality prints using the latest Giclée techniques to achieve 'fine art' standards of reproduction.



28. THE DRIVE £175



29. IN THE PAVILION £175



30. THE CUT £150

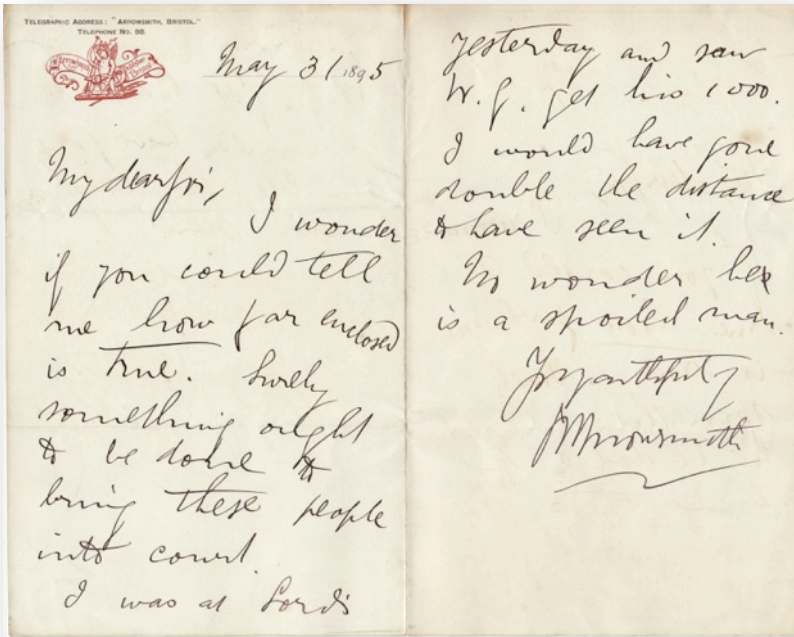


31. IN THE ROLLS ROYCE
The driver is C I Thornton £125



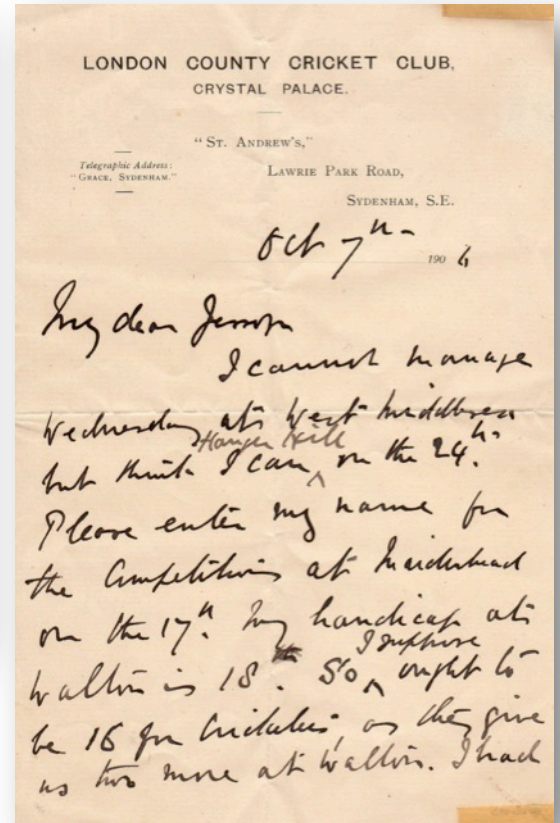
32. PLAYING GOLF £150

W G GRACE LETTERS



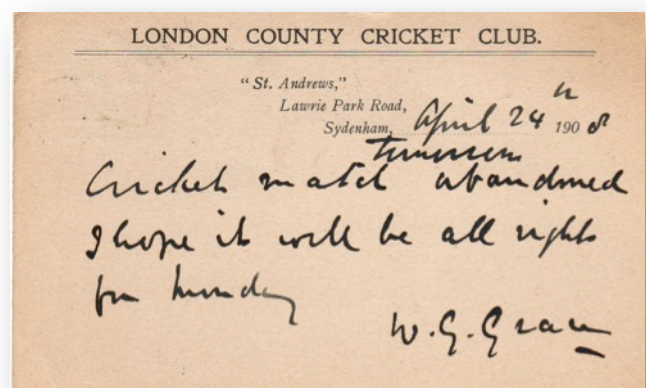
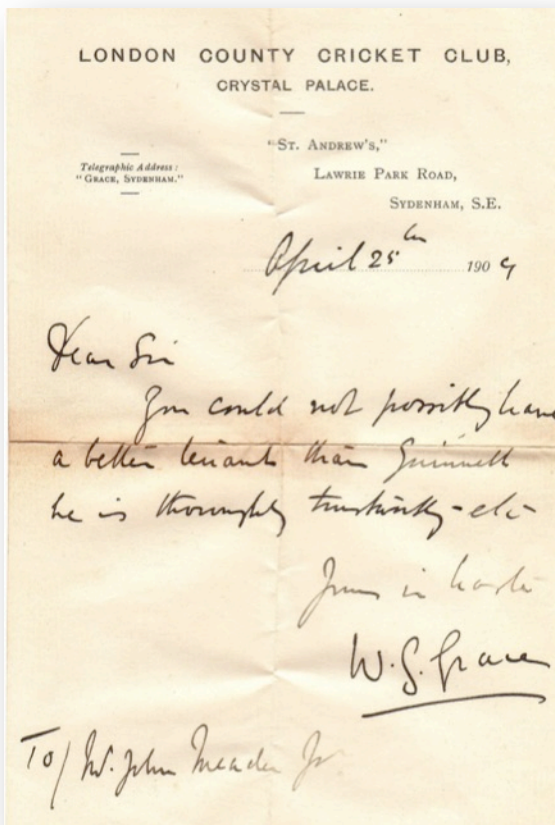
33. LETTER FROM GRACE'S PUBLISHER

2pp ALS dated 31 May 1895 from JW Arrowsmith, then the proprietor of the Bristol based publisher which still thrives today. Arrowsmiths had published *Three Men in a Boat* for Jerome K Jerome and also WG's landmark volume 'Cricket'. He writes, "I was at Lord's yesterday and saw WG get his 1000. I would have gone double the distance to have seen it. No wonder he is a spoiled man." Perhaps their relationship was not always smooth! £200



34. LETTER TO JESSOP (above)

Fine 2pp ALS, dated 7 October 1906 on London County letterhead, to Gilbert Jessop. The letter describes WG's voracious appetite for golf matches; his scrupulous honesty regarding his handicap; a match with George Beldam against Prince Albert and Percy de Paravicini (a noted all round sportsman and tutor to Albert, later George VI). "We downed them all right". £450



35. LETTER TO RM BELL (above)

Brief note to RM Bell regarding an abandoned match on 25 April 1908. By then WG was 59 and did not have many matches left in him. Bell was an old friend from London County days and a noted club cricketer for Sutton and others. £325

36. LETTER OF REFERENCE (left)

Routine ALS giving a reference to a landlord, dated 25 April 1904 on London County letterhead. £250